

# OPEN COURT UNIT 4 LESSON 1 STUDY GUIDE

## Unit 4 Lesson 1 Sound Spelling Double Consonants

better	letter	potter	rubber	soccer
ladder	hammer	scatter	dinner	slippers
tomorrow	summer	pretty	button	happy

### Vocabulary

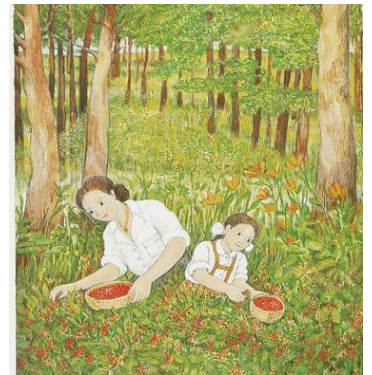
1. remain	2. strung	3. wound ( <i>v</i> )	4. weaver	5. bolt ( <i>noun</i> )
6. shear	7. card ( <i>v</i> )	8. untangling	9. lingonberries	10. garnet
11. tailor	12. porcelain	13. measurements	14. pattern	15. twirl
16. reflection				

### Assignment #1-A-----Due \_\_\_\_\_

For vocabulary words 1--16, neatly and correctly write each word and its definition in your Language Arts spiral notebook. Always use the Glossary in your *Anthology* **first**.

### Assignment #2-----Due \_\_\_\_\_

For each of the vocabulary words, 1—16, write a wonderful sentence which uses the word. Carefully **underline or highlight** the vocabulary word in the sentence.



### Assignment #3-----Due \_\_\_\_\_

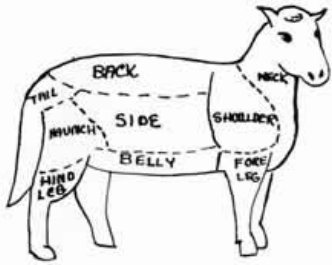
Answer your choice of one of the critical reasoning questions (3—8) in a thoughtful paragraph. Always begin with a topic sentence and carefully support your ideas using details and giving clear explanations.

## Study Questions

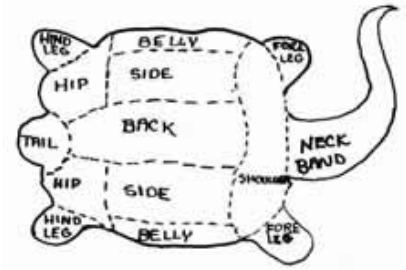
1. What were the items that Anna's mother used for bartering?
2. Create a **FLOW MAP** of the steps Anna's mother took to have the coat made.
3. The farmer told Anna's mother that she and Anna would have to wait until the spring to get the wool. What did Anna use for a coat during the wait? What kinds of problems might she have had because of the delay?
4. The gold watch had belonged to Anna's grandfather. How do you think Anna's mother felt about giving away her father's watch?
5. What value or use do you think the farmer might have had for the watch?
6. Name something that you have that was made by hand. Describe the steps that were used in creating it.
7. If our money were to suddenly lose its value and the only way to get the things you needed was through barter, what do you have which you could use for trade? Why do you think others would find those things useful?
8. If our money were to suddenly lose its value and you had to barter for things you needed, what would you do when the items you had for trade were gone?

# OPEN COURT UNIT 4 LESSON 1 STUDY GUIDE

## PREPARING THE FLEECE

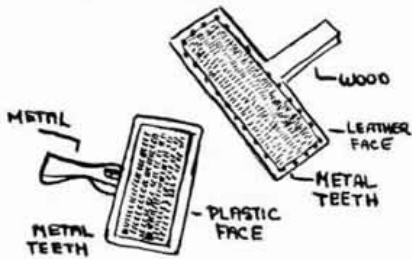


Before beginning carding many spinners wash the fleece while others prefer a fleece with all its natural waxes. using wool this way is called spinning "in the grease." Many people wash theirs if it is not as clean as they think it should be.



Washing a fleece should be done with care to preserve the lanolin and not tangle up the wool any more than necessary. It can be washed in lukewarm water once or twice depending on how dirty it is. If the wool is extremely greasy, a de-greaser could be added to the water. However, when washing the fleece one should be careful not to wash out all of the lanolin because the lanolin makes the wool spin more easily. The lanolin helps hold the fibers together as they are twisted to form the thread.

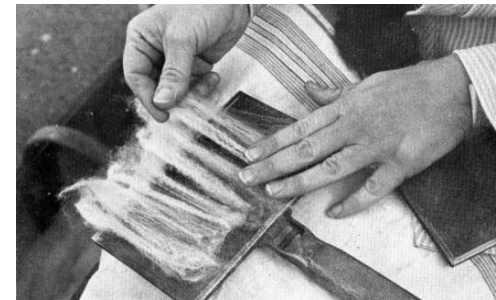
After washing, dry the fleece carefully. To dry the wool lay it on a towel or on a raised screen so that air can get under it. Choose a sunny warm day and dry in the open air, for if the wool does not dry properly, it may get a sour or mildewy smell. After the fleece has been washed and dried, it is ready to be carded.



## CARDING

Carding is the process of combing or straightening out the fibers and removing the trash and tangles so that the spinner can get a yarn of consistent thickness.

You will need two cards, one for the left hand and one for the right. They can be of many different sizes and styles. Cards have other uses than for carding wool. They could be the same cards you comb your sheep with when preparing them for a show. These are called blocking cards. Or you can use cards that were made especially for carding.



The most common cards are made of metal or wood with wire teeth. Early carding cloth was made of leather or heavy material inset with fine wire hooks. The cloth was mounted on a pair of wooden bats with handles. Present day cards come in different widths and lengths along with the variations of the sizes and spacings of the metal teeth. (see diagram # 2) The teeth make a lot of difference as to how fine and straight the fibers will be when it is time to spin. A favorite of many is twelve teeth to an inch. This spacing produces a long fine fiber.

Before cards were made, wool was sometimes carded using the dried heads of teasel. Teasel is a common plant of England which has naturalized in America. It has a dandelion-like bloom. When the bloom turned brown, it was hung upside down to dry, forming a stiff pod. The pod was held in one hand and the wool pulled over it as in combing hair.